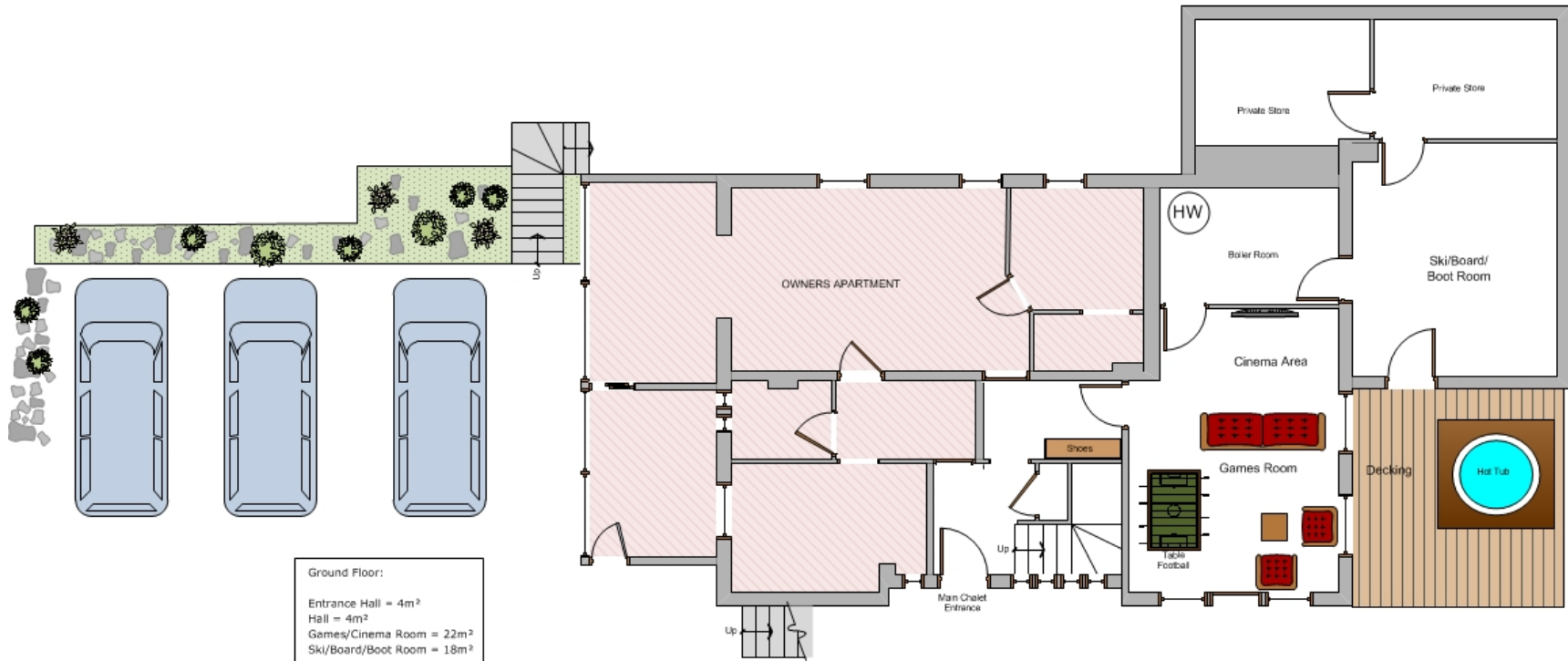


Chalet Morzine



Ground Floor:
 Entrance Hall = 4m²
 Hall = 4m²
 Games/Cinema Room = 22m²
 Ski/Board/Boot Room = 18m²
 TOTAL Ground Floor = 113m²
 (Including internal walls & stairwells)
 TOTAL Ground Floor = 150m²
 (Including internal walls & stairwells, Stores & Garages)

Ground Floor Plan

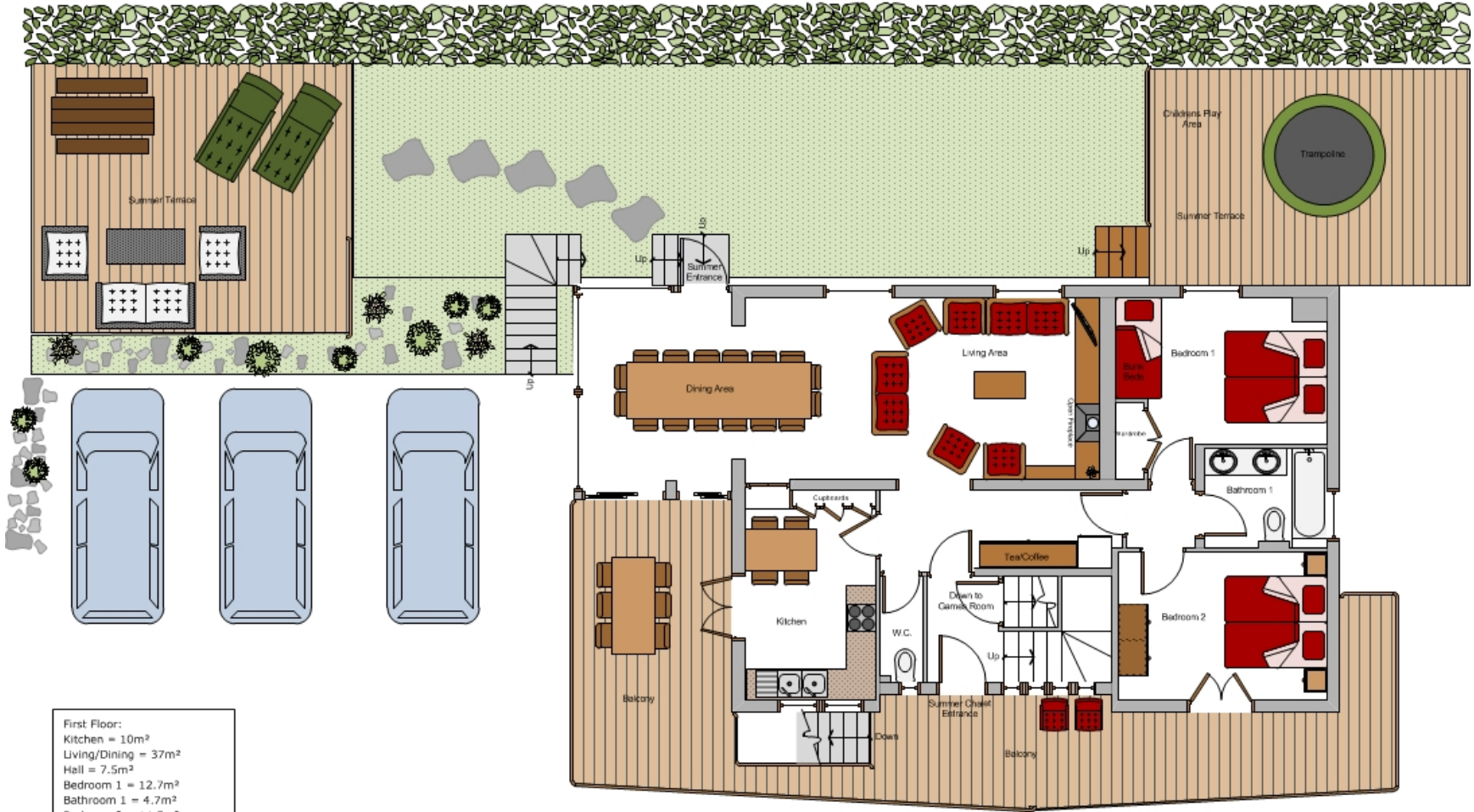
SCALE: 1:100



Pic:Toria
 Design

SPECIALISTS IN FLOOR PLANS
 Tel: 06 15 36 00 01
 www.pictoriadesign.com
 info@pictoriadesign.com

Chalet Morzine

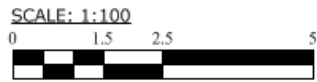


First Floor:
 Kitchen = 10m²
 Living/Dining = 37m²
 Hall = 7.5m²
 Bedroom 1 = 12.7m²
 Bathroom 1 = 4.7m²
 Bedroom 2 = 11.5m²

 TOTAL Ground Floor = 100m²
 (Including internal walls & stairwells)

 Balcony = 40m² (approx)

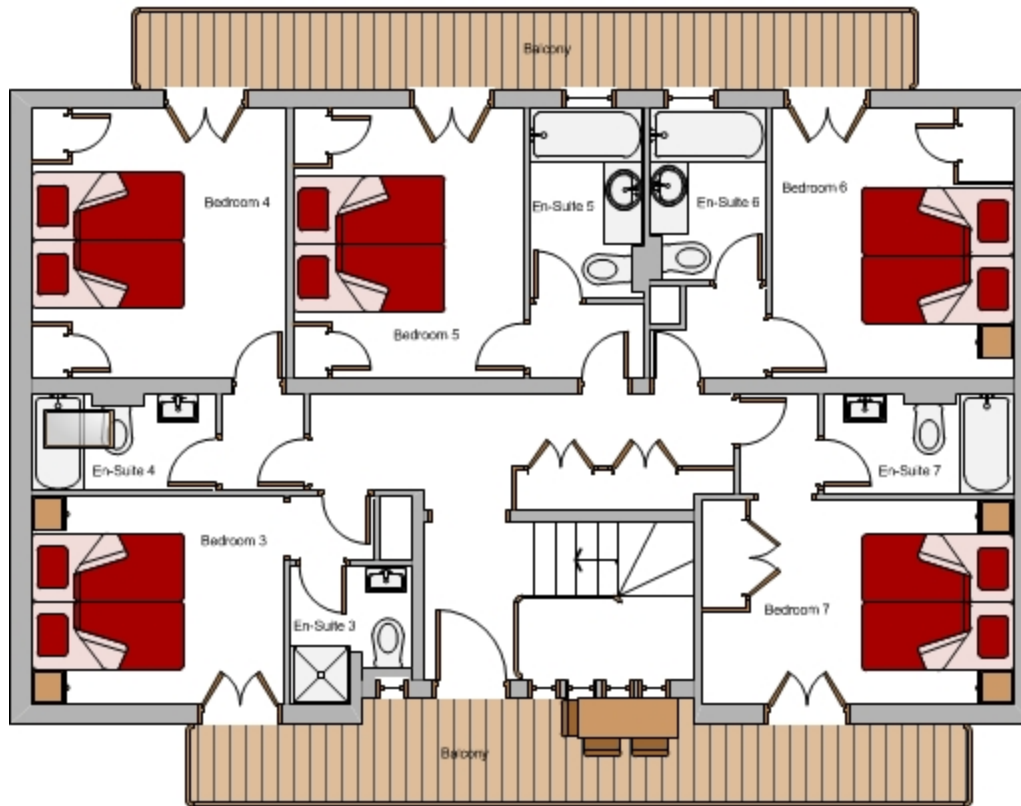
First Floor Plan



Pic:Toria
Design

SPECIALISTS IN FLOOR PLANS
 Tel: 06 15 36 00 01
 www.pictoriadesign.com
 info@pictoriadesign.com

Chalet Morzine



Second Floor Plan

Second Floor:
 Bedroom 3 = 10m²
 En-Suite 3 = 2m²
 Bedroom 4 = 12m²
 En-Suite 4 = 3m²
 Bedroom 5 = 11m²
 En-Suite 5 = 3.5m²
 Bedroom 6 = 11m²
 En-Suite 6 = 3.5m²
 Bedroom 7 = 12m²
 En-Suite 7 = 3m²
 Hallway = 8m²

TOTAL Second Floor = 100m²
 (Including internal walls & stairwells)

Balconies/Terrace = 22m²
 (approx)

TOTAL ALL FLOORS = 350m²

SCALE: 1:100



Pic:Toria
 Design

SPECIALISTS IN FLOOR PLANS
 Tel: 06 15 36 00 01
 www.pictoriadesign.com
 info@pictoriadesign.com